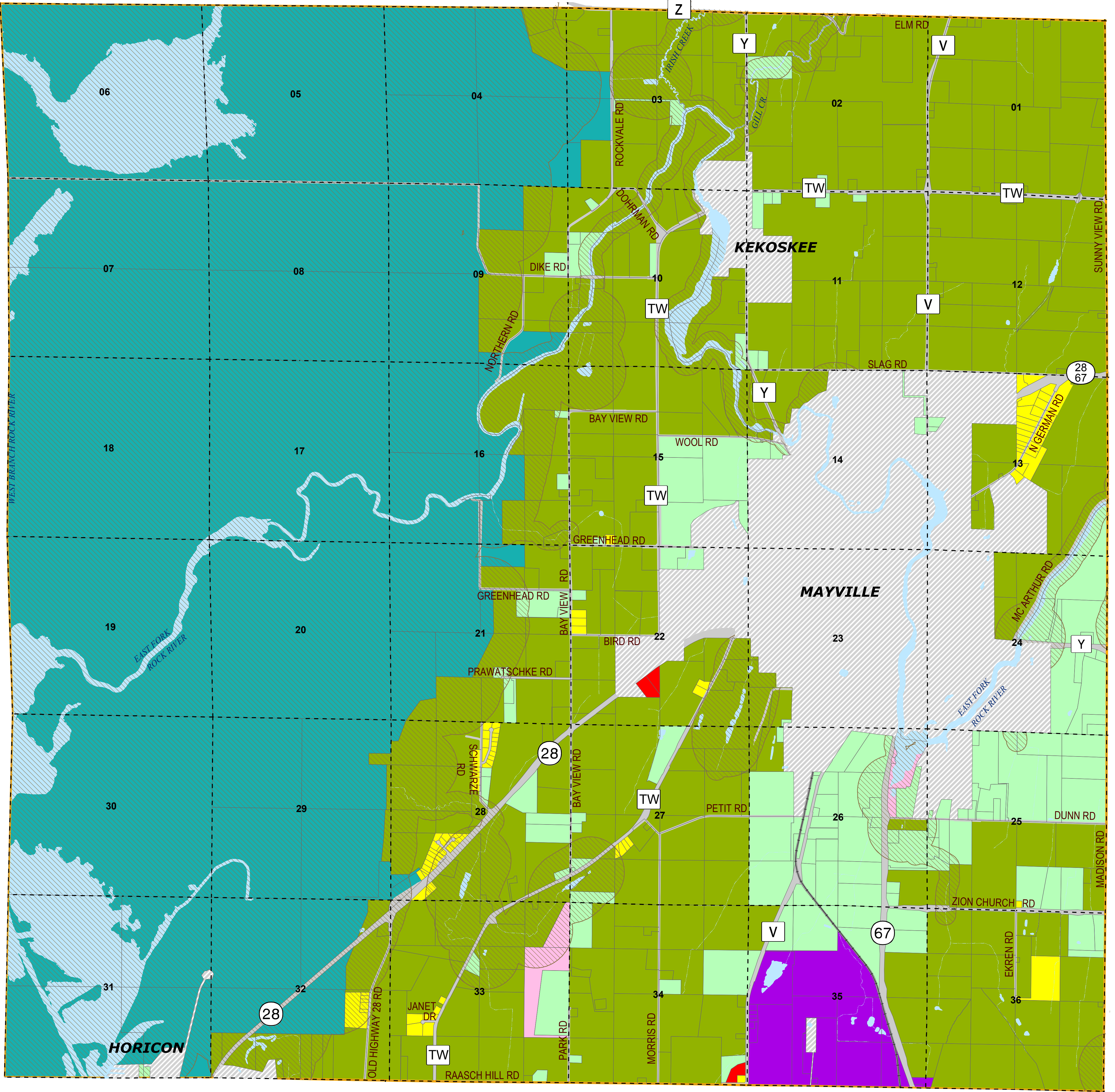


TOWN OF WILLIAMSTOWN

FARMLAND PRESERVATION ZONING



LEGEND

- US Highways
- State Roads
- County Roads
- Town Roads
- Railroads
- PLS Sections
- Town Boundaries
- Cities & Villages
- Tax Parcels
- Waterbodies

ZONING DEFINITIONS

- FP Farmland Preservation
- AG Agricultural (General)
- R Residential
- C Commercial
- IM Industrial & Manufacturing
- REC Recreation
- CON Conservancy
- Dodge County Shoreland Zoning

Disclaimer: In light of the Hegwood vs Town of Eagle Board of Appeals decision, the town may not have the authority to zone within the shoreland district. For restrictions within the shoreland district, landowners should consult the county shoreland ordinance.

THIS IS TO CERTIFY THAT THIS MAP IS A CERTIFIED COPY OF THE OFFICIAL ZONING MAP ADOPTED AND APPROVED WITH THE ZONING ORDINANCE, TOWN OF WILLIAMSTOWN, DODGE COUNTY, WISCONSIN ON NOVEMBER 10TH, 2014 BY THE TOWN BOARD OF THE TOWN OF WILLIAMSTOWN. (COUNTY BOARD APPROVED DECEMBER 16TH, 2014)

Dodge County
Land Resources and Parks
Department

MAP CREATED: 09/29/14
DATCP CERTIFIED: 10/17/14
TOWN ADOPTED: 11/10/14
COUNTY APPROVED: 12/16/14
MAP REVISED:

